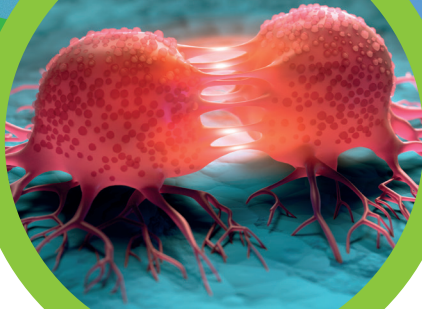


# SinaDoxosome



## Hodgkin lymphoma, salvage treatment (off-label use)

15 mg/m<sup>2</sup> (transplant-naive patients) days 1 and 8 every 3 weeks (in combination with gemcitabine and vinorelbine) for 2 to 6 cycles.



GVD (gemcitabine (G), vinorelbine (V), and pegylated liposomal doxorubicin (D)) regimen: 10 mg/m<sup>2</sup> (post-transplant patients)



### Study:



- Well tolerated regimen for relapsed HL.
- High RRs in transplant failed patients.
- Active even in heavily pretreated patients