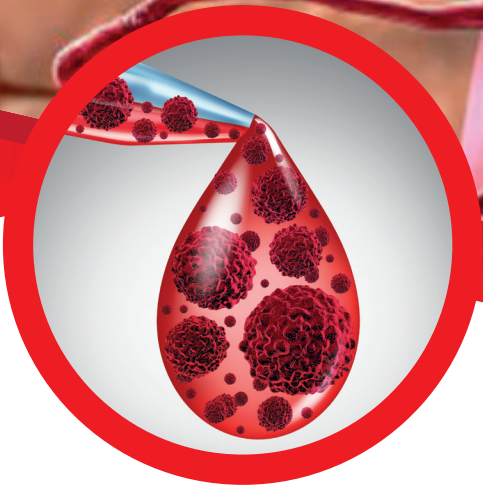


SinaDoxosome



Multiple myeloma

Bortezomib

Bortezomib 1.3 mg/m²
On days 1, 4, 8 and 11 every 21 days



PLD

PLD 30 mg/m² on day 4
and the same Bortezomib regimen



Versus

Results:



- Superior to Bortezomib monotherapy for relapsed or refractory patients.
- Higher incidence of grade 3/4 myelosuppression, constitutional symptoms, GI and dermatologic toxicities.

30 mg/m² on day 4 every 21 days (in combination with bortezomib) in patients who are bortezomib-naïve and have received at least 1 prior therapy. For 8 cycles or until disease progression or unacceptable toxicity (Orlowski 2007)

The fourth day of treatment



Multiple myeloma, newly diagnosed (off-label dosing)

IV: 40 mg/m² on day 1 every 4 weeks (in combination with vincristine and dexamethasone) for at least 4 cycles (Rifkin 2006).

